

所在：伊予市森字藏地甲140、甲142-1

求積表

Table with 5 columns: 地番, NO, Xn, Yn, Yn+1-Yn-1, Xn * (Yn+1-Yn-1). Includes sub-table for ① 甲142-1(1号地) and a total row.

Table with 5 columns: 地番, NO, Xn, Yn, Yn+1-Yn-1, Xn * (Yn+1-Yn-1). Includes sub-table for ② 甲142-1(2号地) and a total row.

Table with 5 columns: 地番, NO, Xn, Yn, Yn+1-Yn-1, Xn * (Yn+1-Yn-1). Includes sub-table for ③ 甲142-1(後退用地1) and a total row.

Table with 5 columns: 地番, NO, Xn, Yn, Yn+1-Yn-1, Xn * (Yn+1-Yn-1). Includes sub-table for ④ 甲142-1(後退用地2) and a total row.

求積図

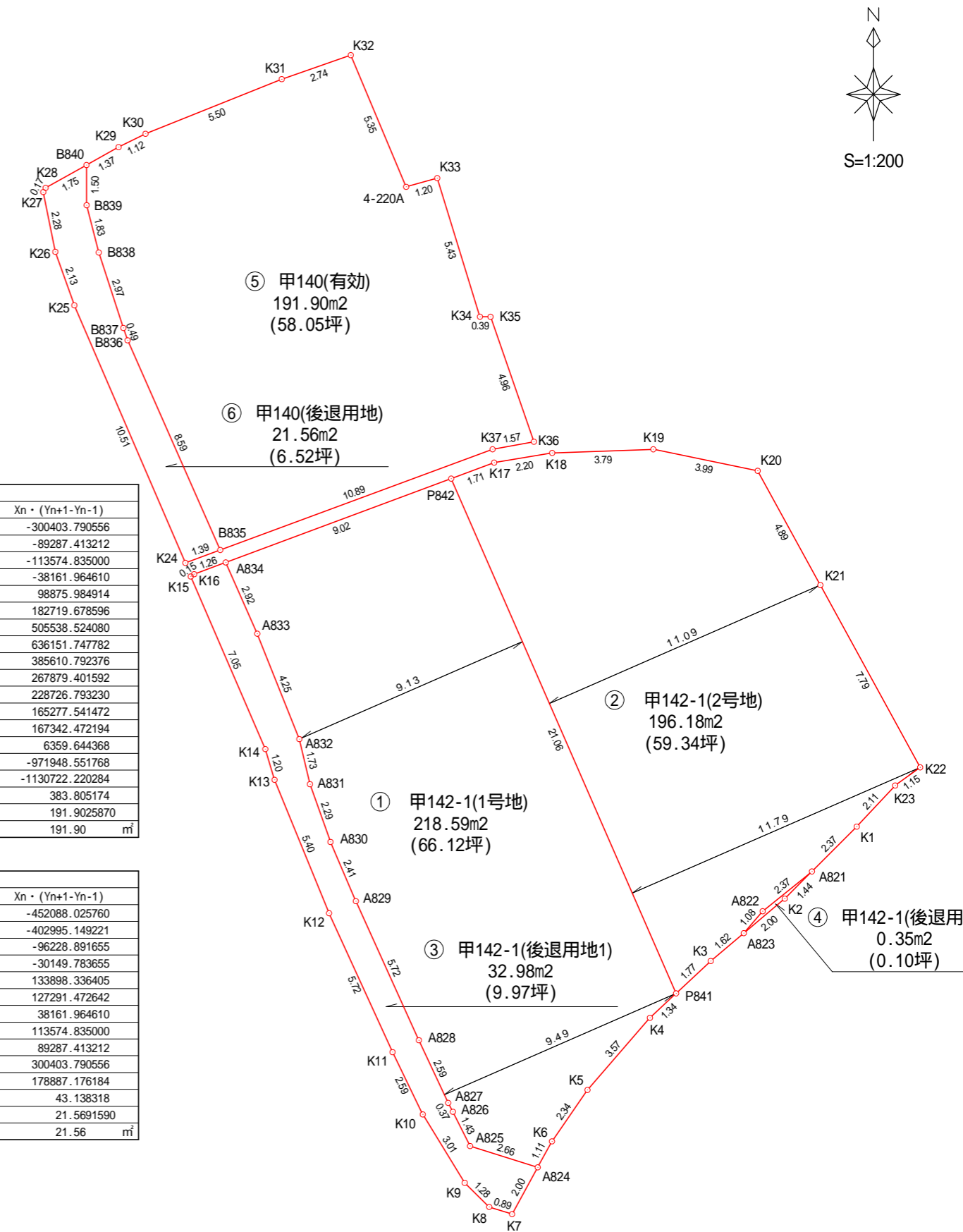


Table with 5 columns: 地番, NO, Xn, Yn, Yn+1-Yn-1, Xn * (Yn+1-Yn-1). Includes sub-table for ⑤ 甲140(有効) and a total row.

Table with 5 columns: 地番, NO, Xn, Yn, Yn+1-Yn-1, Xn * (Yn+1-Yn-1). Includes sub-table for ⑥ 甲140(後退用地) and a total row.

Summary table with 2 columns: 総合計面積, 661.5995175 m².

Summary table with 3 columns: 地番, 地積, 坪. Lists parcels ① through ⑥ with their respective areas in square meters and tsubo.